

GEScene for MapInfo

Version 1.5



Installation Guide

Table of Contents

<i>Introduction.....</i>	<i>3</i>
<i>Prerequisites</i>	<i>3</i>
<i>Installation</i>	<i>4</i>
<i>Autoload Option.....</i>	<i>7</i>
<i>File Descriptions.....</i>	<i>8</i>
<i>Uninstalling.....</i>	<i>8</i>

Introduction

GEScene is a MapInfo utility that allows images to be exchanged in both directions between MapInfo and Google Earth. Placemarks can also be created in Google Earth by using MapInfo as a point of reference to easily pinpoint more obscure locations.

Images saved in Google Earth can be registered and displayed in MapInfo to compliment existing map layers.

Conversely, the contents of any MapInfo map window can be displayed in Google Earth as an image overly.

Google Earth is a great application for viewing data in the real world, but is limited in its ability to display, edit and locate data from external sources.

MapInfo on the other hand, is very good at displaying, editing and locating data from many different sources, but lacks the visual impact provided by Google Earth.

GEScene helps compliment the features of both these applications by allowing more flexibility when displaying and analysing data.

Prerequisites

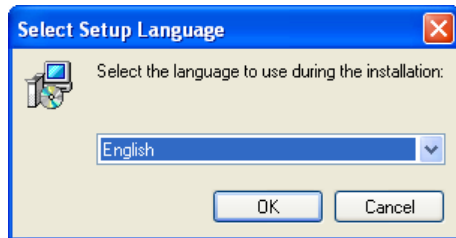
GEScene requires the following applications and settings be applied to your computer.

- MapInfo Professional for Windows v4.5 or above.
<http://www.mapinfo.com/>
- Google Earth, Google Earth Plus or Google Earth Pro.
<http://earth.google.com>
- Screen resolution set to one of the following resolutions - 800x600, 1024x768, 1280x800, 1280x1024 1400x1050, 1680x1050 or 1920x1200.

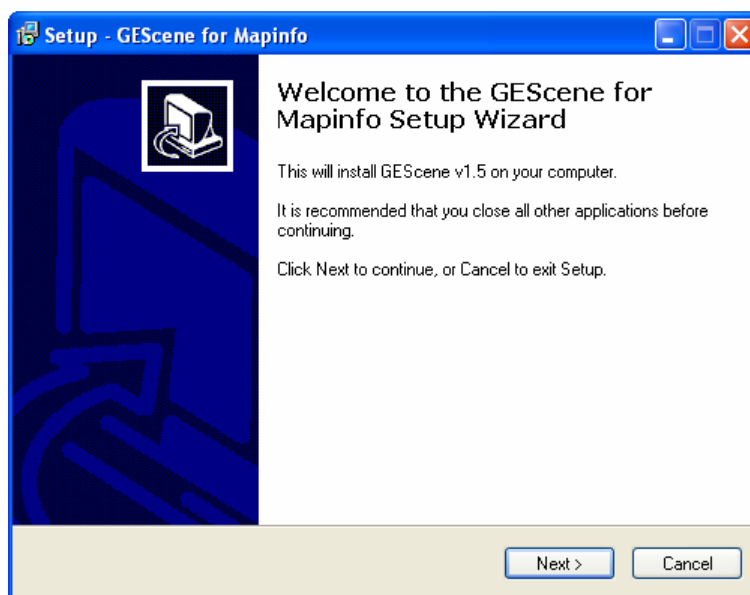
This user guide assumes you have a moderate understanding of the operation of MapInfo Professional & Google Earth.

Installation

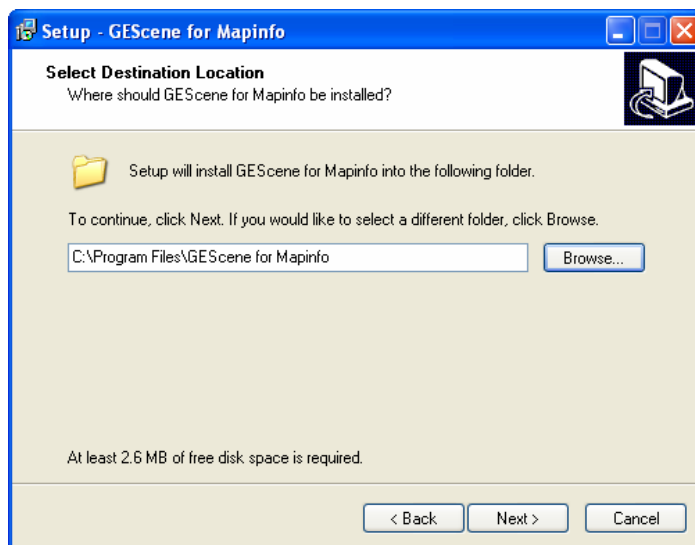
To install GEScene, run *GEScene Setup.exe*. This will start the automated installation process...



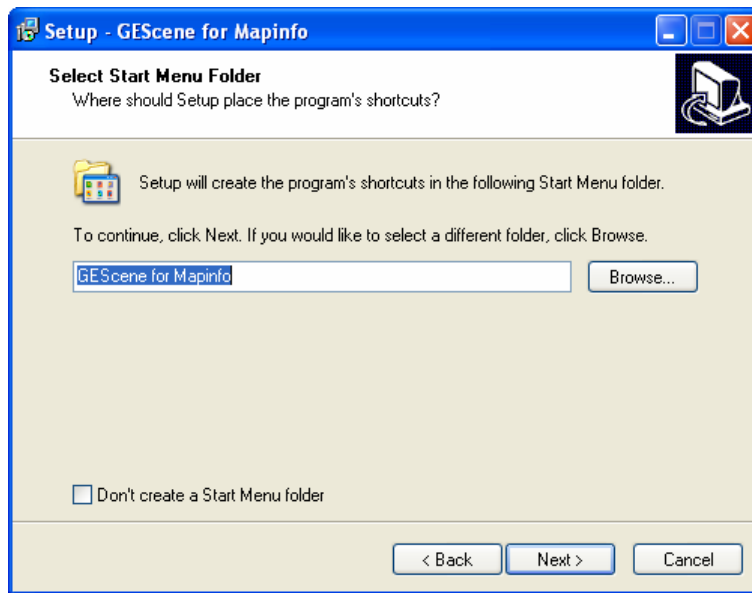
Select the setup language and press *OK*.



Select *Next* to continue, or *Cancel* to exit the installation.

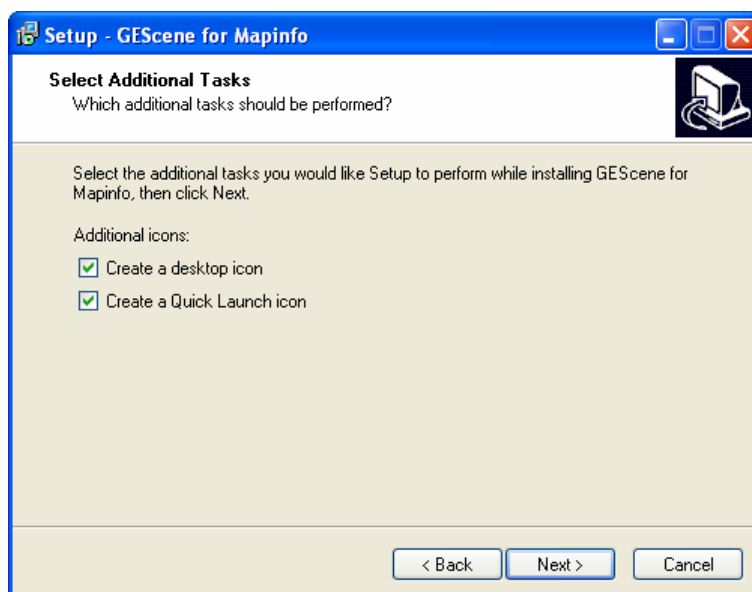


Select the destination folder then select *Next*.

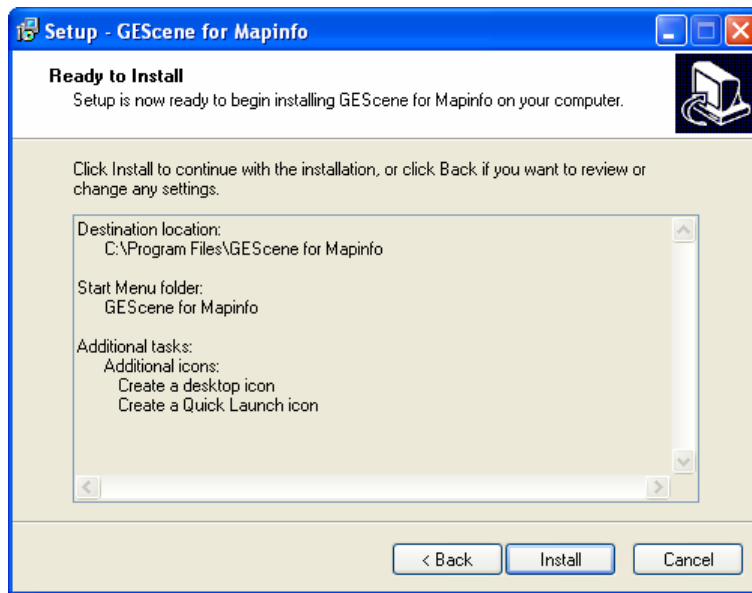


Select the *Start Menu folder* where the GEScene shortcut will be placed or select *Don't create a Start Menu folder* to bypass this option.

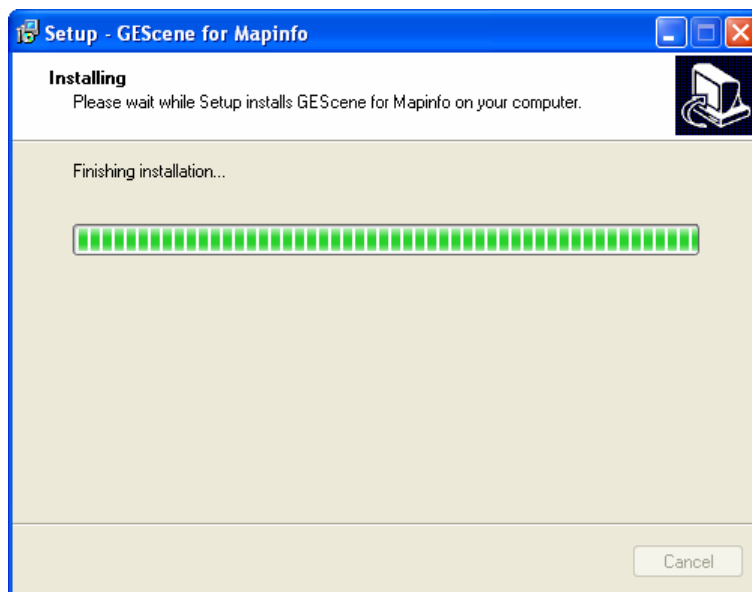
Select *Next* to continue.



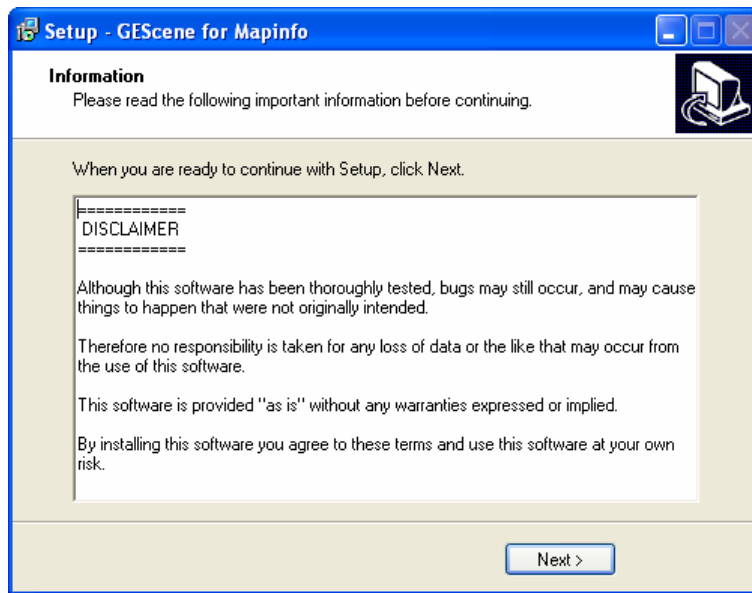
Select the required icon options then select *Next*.



Select *Install* to confirm settings and continue with the installation, or select *Back* to revise previous settings.



A dialog will display showing the progress of the installation.



Read the *Disclaimer* then select *Next*.



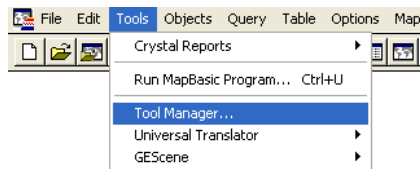
Select *Finish* to exit the setup and optionally launch GEScene.

Autoload Option

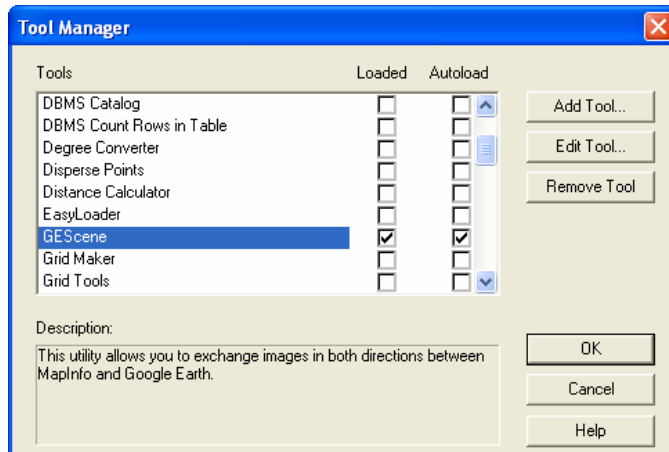
GEScene can be set to load automatically each time MapInfo is started.

As part of the installation process, GEScene is added to the MapInfo *Tool Manager*.

Access the *Tool Manager* by selecting *Tools > Tool Manager* from the MapInfo menu bar.



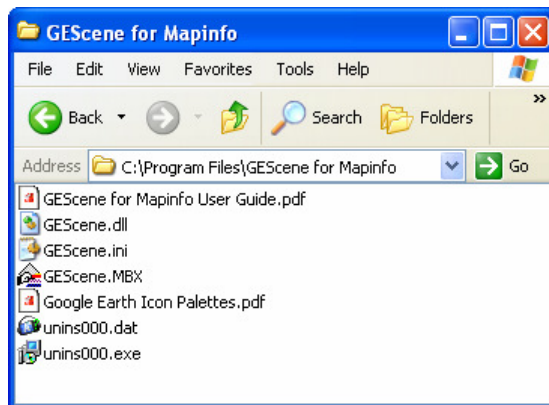
Locate the GEScene entry in the *Tool Manager* and check the *Autoload* option.



Select *OK*

File Descriptions

Once installation is complete the installation directory will contain the following files.



- *GEScene for MapInfo User Guide.pdf* – Detailed guide to using GEScene
- *GEScene.dll* – Resource file
- *GEScene.ini* – Default initialisation file
- *GEScene.mbx* – Main application file
- *Google Earth Icon Palettes.pdf* - Google Earth standard icon palettes
- *Unins000.dat* – Uninstallation data file
- *Unins000.exe* – Uninstallation executable

Uninstalling

To uninstall GEScene see *the Uninstalling* section in the *GEScene for MapInfo User Guide*. This can be found in the installation directory or by selecting *Tools > GEScene > User Guide* from the MapInfo menu bar.